

# Off-Campus Library Access

## Logging In to Library EResources

When you are off campus, you will need to log in to Library resources using your EasyLogin, or **email username** and **email password**. As long as you leave your browser window open, you can come back to the Library website and select another resource without logging in again. Contact us if you have trouble accessing Library resources.

## College Library Database Login

Please enter your email username and password as in the examples below:

**Students:**

If your email address is **jdoh123@students.ccsnh.edu**

Then your username is **jdoh123**

**Faculty and Staff:**

If your email address is **jdoh@ccsnh.edu**

Then your username is **jdoh**

**Follow these instructions!**

**In both cases your password is your email password.**

Please enter your username:

Please enter your password:

Login

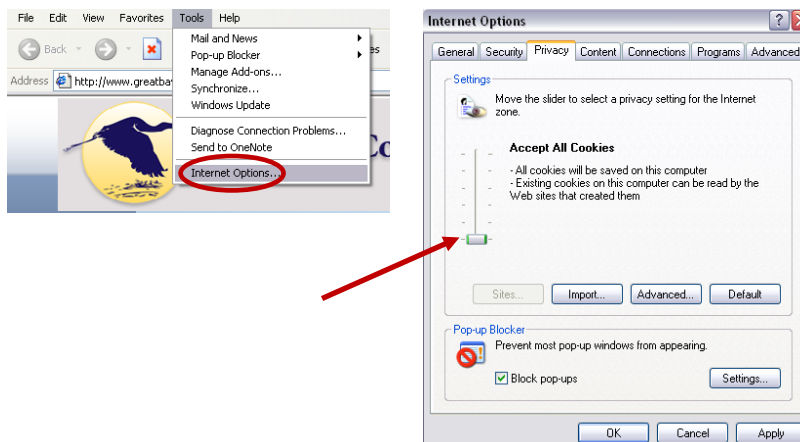
## Enabling Cookies in your Browser

The browser (such as Internet Explorer or Firefox or Chrome) on your computer should remember your login information. If it does not, or if you see this message:

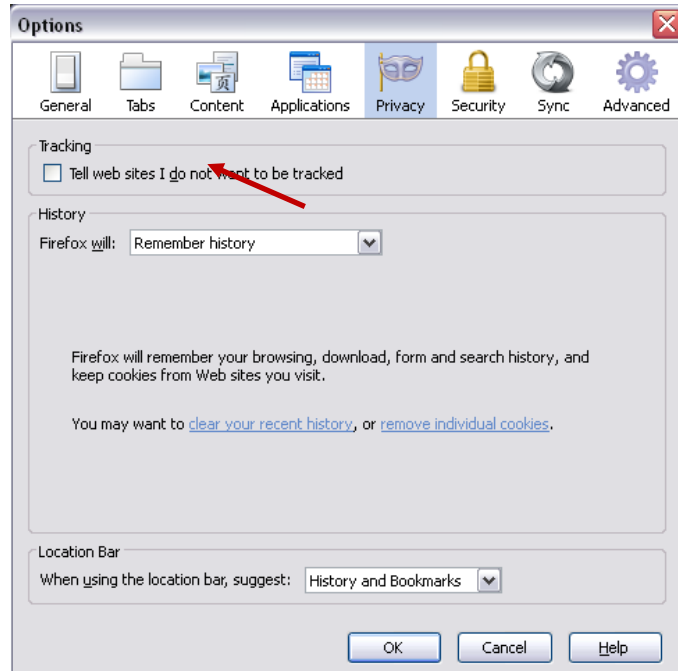
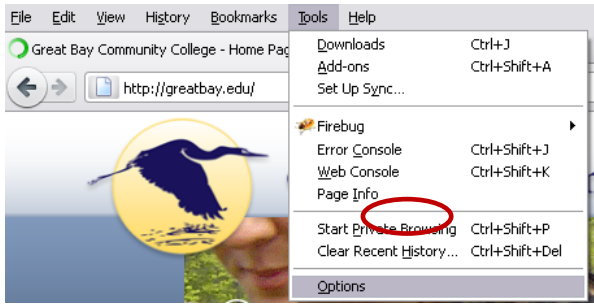


You need to enable cookies. To do this:

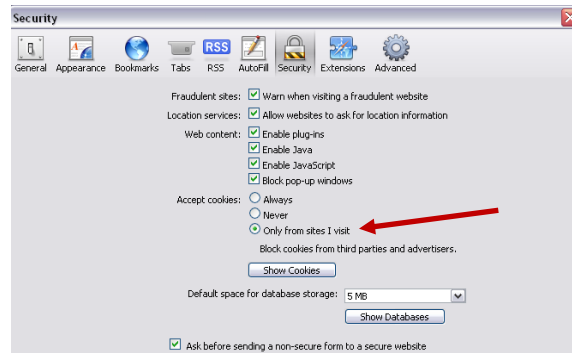
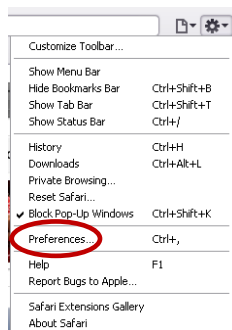
In **Internet Explorer**, go to the top of the browser and select **Tools**, then **Internet Options**. Under **Privacy**, lower the slider to **Accept All Cookies**.



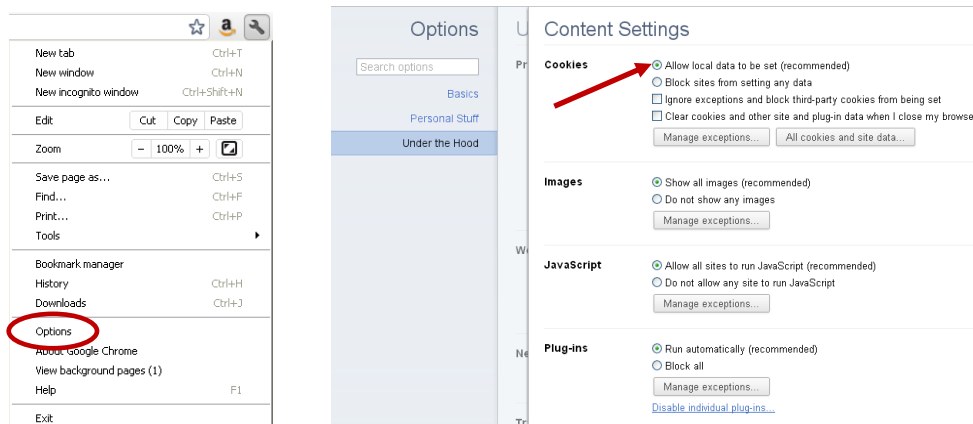
In **Firefox**, select **Tools, Options**, then **Privacy**, and change the setting to **Remember history**.



In **Safari**, click the gear icon in the right corner of the browser. Then select **Preferences, Security**, and set **Accept cookies** to either **Always** or **Only from sites I visit**.



In **Google Chrome**, click on the wrench icon in the right corner of the browser, and select **Options**. Then select **Under the Hood**, and under **Privacy, Content Settings**. Set **Cookies** to **Allow local data to be set**.



**Need more help?** Contact us:

**Library** 603-427-7618  
[reference@ccsnh.edu](mailto:reference@ccsnh.edu)

**Help Desk** [greatbay.edu/helpdesk](http://greatbay.edu/helpdesk)