

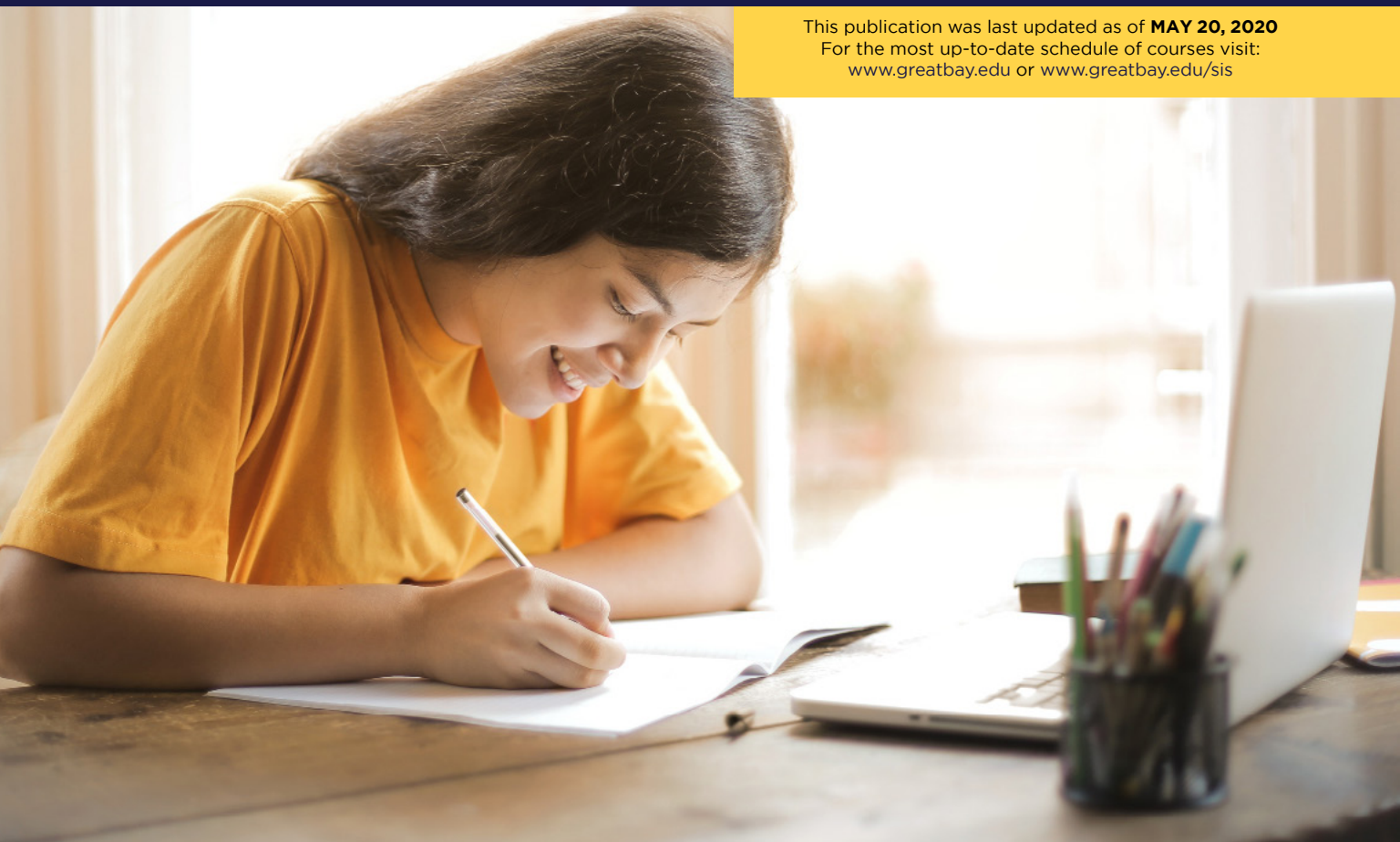


Great Bay  
Community College

PORTSMOUTH / ROCHESTER  
greatbay.edu

# 2020 **SUMMER** Course Schedule

This publication was last updated as of **MAY 20, 2020**  
For the most up-to-date schedule of courses visit:  
[www.greatbay.edu](http://www.greatbay.edu) or [www.greatbay.edu/sis](http://www.greatbay.edu/sis)



*Due to circumstances surrounding COVID-19, the college is currently operating remotely. Information in this document has been updated to reflect current processes set in place during this time. New students should direct questions to the Admissions Office at [gbadmissions@ccsnh.edu](mailto:gbadmissions@ccsnh.edu) or (603)427-7632 and returning students should contact the Advising & Transfer Center at [greatbayadvising@ccsnh.edu](mailto:greatbayadvising@ccsnh.edu) or (603)427-7728*

**REGISTER NOW FOR SUMMER**  
**100% ONLINE OR ZOOM CLASSES START **MAY 26****

---

**FOR THE MOST UP-TO-DATE SCHEDULE OF COURSES VISIT:**  
**[WWW.GREATBAY.EDU/SCHEDULE](http://WWW.GREATBAY.EDU/SCHEDULE)**



# SUMMER 2020 MAKE THE MOST OF IT

## Classes start May 26

Move through your degree faster

Earn credits that transfer

Save on tuition

Build professional skills

Explore a new interest

**Home for the summer?  
We have the course for you,  
including:**

Nutrition

College Composition

Computer Technologies

Microeconomics

Macroeconomics

Pre-Calculus & Calculus I

Probability & Statistics

Microbiology

Western Civilization

Introduction to Psychology

**Day, evening and online courses available.**

For information on how to register for courses,  
contact the Advising Center at **[greatbayadvising@ccsnh.edu](mailto:greatbayadvising@ccsnh.edu)**



# Seamless Transfer

Would you benefit from starting college close to home, with time to better define your educational goals? Are you uncertain about financing your education for four years? Great Bay may be for you.

Many students choose to start at GBCC and transfer on to a bachelor's degree. Others make the decision once they are here.

To learn more about transfer options, contact our **Admissions Department** at (603) 427-7632 or [gbadmissions@ccsnh.edu](mailto:gbadmissions@ccsnh.edu).

**Already a student?**  
Contact our **Advising & Transfer Center** at [greatbayadvising@ccsnh.edu](mailto:greatbayadvising@ccsnh.edu)



THE NEW HAMPSHIRE  
**DUAL ADMISSION**  
P R O G R A M



As a first year student, you have the opportunity to enroll in the Dual Admission Program between Great Bay Community College (GBCC) and a University System of New Hampshire school. Start your college career at Great Bay, earn your associate degree, and continue on to a USNH school for your bachelor's degree.

Contact our Admissions Department to learn more. (603) 427-7632 or [gbadmissions@ccsnh.edu](mailto:gbadmissions@ccsnh.edu)



**Great Bay**  
Community College

## INTERESTED IN TRANSFERRING ON TO SOUTHERN NH UNIVERSITY?

GBCC and SNHU recently renewed a dual admission agreement allowing students who have completed an associate degree program at Great Bay to seamlessly complete their bachelor's degree at SNHU without additional admissions requirements. Students can apply to SNHU at any time during their matriculation at Great Bay. Acceptance is contingent upon completion of the associate degree and a cumulative grade point average of 2.0 or higher. SNHU will accept up to 90 credits towards the bachelor's degree. SNHU will work with you each semester to create your one-of-a-kind transfer pathway. SNHU and GBCC developed specific agreements that outline the courses students need to take at GBCC that will directly transfer into the desired degree program at SNHU. This allows students to plan out their course schedules for every semester.

For additional information, visit: [www.snhu.edu/transfer](http://www.snhu.edu/transfer)



## How to *Enroll*

# 3 Easy Steps

# 1

### APPLY

Apply online. Visit **greatbay.edu/admissions**, to submit your application.

# 2

### TEST

Schedule an **ACCUPLACER®** test appointment. Contact our **Admissions Department** at **603-427-7632** or email **gbadmissions@ccsnh.edu**

# 3

### REGISTER

Speak with an advisor to develop a comprehensive educational plan, register for classes and review support services. Contact our **Advising & Transfer Center** at: **greatbayadvising@ccsnh.edu** or call **(603) 427-7728**

We offer a rolling, open admission policy to anyone with a high school diploma or GED. If you want to attend college, you are welcome here at GBCC. No application deadlines. Enrolling is easy!

Great Bay offers over **50 associate degree and certificate programs** online and on-campus as well as non-credit professional development, career training and corporate training.

**Ready to move ahead this Summer?** Whether you are looking to start or complete a degree, build a foundation for future degrees, build a career or upgrade career skills, our experienced faculty, high quality programs, affordable tuition and supportive community will help prepare you for what's next.

# SUMMER 2020 Credit Course Schedule

**Key** For complete course descriptions and updates visit: [www.greatbay.edu](http://www.greatbay.edu)

<b>Matriculated / Current</b>	Students who have applied and been accepted to a program.
<b>Non-Matriculated</b>	Students who have not applied or been accepted to a program.
<b>Evening-Wknd Classes</b>	Classes that meet face-to-face starting at 5PM or later or weekend classes.
<b>Day</b>	Classes that meet prior to 5pm
<b>Prereq.</b>	Pre-requisite (registration requires prior coursework)
<b>Co-req.</b>	Co-requisite (registration requires concurrent coursework)
<b>CRN</b>	Course Reference Number
<b>Term</b>	Start & End Date of Term
<b>Title</b>	Course Name
<b>CR</b>	Credits
<b>CRSE</b>	Course
<b>NC</b>	Non Credit
<b>Days</b>	<b>M</b> -Monday <b>T</b> -Tuesday <b>W</b> -Wednesday <b>R</b> -Thursday <b>F</b> -Friday <b>S</b> -Saturday
<b>Online</b>	100% Online courses – courses that do not physically meet on campus during the semester. All instruction takes place in an online environment.
<b>Online ZOOM</b>	This course is offered in whole or in part via web conferencing tool Zoom. You will attend class synchronously online from any location with a stable internet connection, camera, mic, speakers and other minimum system requirements.

Custom Term	Full Term 11 Weeks 5/26-8/8	1st Half 6 Weeks 5/26-7/02
2nd Half 6 Weeks 7/6-8/14	Late Start 8 Weeks 6/22-8/14	Front Part 8 Weeks 5/26-7/17

## Tuition and Fees

In-State Students (NH Residents)	*215.00 per credit
New England Regional Students	*323.00 per credit
Out of State Students/International Students	*490.00 per credit
Evening (5pm start or later) or 100% Online or Saturdays	*215.00 per credit
Student Comprehensive Fee (all credit courses)	*25.00 per credit

## Payment Deadlines

May 11, 2020	For classes that begin the week of May 11, 2020
June 2, 2020	For classes that begin the week of May 26, 2020
June 15, 2020	For classes that begin the week of June 15, 2020
June 22, 2020	For classes that begin the week of June 22, 2020
July 6, 2020	For classes that begin the week of July 6, 2020

\*The tuition rate is subject to the approval of the Board of Trustees and is subject to change without notice.

\*An additional fee will be charged for all Laboratory/Clinical/Practicum or other similar experiences. This fee is calculated by subtracting the number of lecture hours from the number of credit hours and multiplying the remainder by \$110. This fee will be added to the normal tuition charge for that course.

**EXAMPLE:** BIOL 110G "Anatomy & Physiology" 4 Credits - 3 Lecture Hours = 1X110 = \$110

"Please note that charges will be printed out on student Schedule/Bills at College Services One Stop and will be posted to individual Student Information System (SIS) accounts under Student > Student Records > Account Summary by Term."

### Disclaimer:

Great Bay Community College provides its website, catalog, handbooks, and any other printed materials or electronic media for your general guidance. The College does not guarantee that the information contained within them, including, but not limited to, the contents of any page that resides under the Domain Name System (DNS) registration of [www.greatbay.edu](http://www.greatbay.edu) is up-to-date, complete and accurate, and individuals assume any risks associated with relying upon information without checking other credible sources, such as a student's academic advisor. In addition, a student's or prospective student's reliance upon information contained on the College's website, or within catalogs or handbooks, when making academic decisions does not constitute, and should not be construed as, a contract with the College. Further, the College reserves the right to make changes to any provision or requirement within these sources, as well as changes to any curriculum or program, whether during a student's enrollment or otherwise.

### Non Discrimination Information:

Great Bay Community College does not discriminate in the administration of its admissions and educational programs, activities, or employment practices on the basis of race, color, religion, national origin, age, sex, disability, genetic information, veteran status, sexual orientation, political affiliation or marital status. For complete Notice of Nondiscrimination visit: [www.greatbay.edu/catalog](http://www.greatbay.edu/catalog). Inquiries regarding discrimination may be directed to the Great Bay Community College Title IX Coordinator at GBCCTI-telX@ccsnh.edu, or to Community College System personnel at 26 College Drive, Concord, NH 03301: Sara Sawyer, Director of Human Resources, 603-230-3503 or William Thomas, Title IX Coordinator, 603-230-3516

### Gainful Employment:

Important information about the educational debt, earnings, and completion rates of students who attended GBCC Gainful Employment (Certificate) programs may be found at <http://greatbay.edu/gainfulemployment>

CRN	CRSE	SECT	ROOM	TITLE	CR	TERM	DAYS	TIMES	Prereq.
<b>ACCOUNTING</b>									
30356	ACCT 113G	ZS	ZOOM	Acct & Financial Reporting I	3	5/26-7/2	MW	5:30-9:00 PM	
30357	ACCT 123G	ZS	ZOOM	Acct & Financial Reporting II	3	7/6-8/14	MW	5:30-9:00 PM	Prereq
<b>ADVANCED COMPOSITES MANUFACTURING (Rochester Campus)</b>									
30858	ACM 120G	ZS	ZOOM	Technical Blueprint Reading	2	6/15-8/7	TR	1:30-4:30 PM	Prereq
<b>ALLIED HEALTH</b>									
30379	AHLT 110G	ZS	ZOOM	Medical Terminology (5/26, 6/2, 6/9, 6/16, 6/30, 7/7, 8/4)	3	5/26-8/8	T&OL	8:30-10:00 AM	
<b>ANTHROPOLOGY</b>									
30352	ANTH 101G	ZZ		Introduction to Anthropology	3	5/26-8/8	ONLINE		
<b>ARTS</b>									
30336	ARTS 117G	ZZ		Art History I	3	5/26-8/8	ONLINE		
30288	ARTS 123G	ZZ		Drawing I	3	5/26-8/8	ONLINE		
<b>BIOLOGICAL SCIENCE</b>									
30289	BIOL 106G	ZZ		The Human Body	4	5/26-7/17	ONLINE		
30342	BIOL 110G	ZZ3		Human Anatomy & Physiology I	4	5/26-7/17	ONLINE		Prereq
30290	BIOL 110G	ZZ2		Human Anatomy & Physiology I	4	5/26-8/8	ONLINE		Prereq
31088	BIOL 110G	ZZ1		Human Anatomy & Physiology I	4	5/26-7/17	ONLINE		Prereq
31016	BIOL 120G	ZZ1		Human Anatomy & Physiology II	4	5/26-7/17	ONLINE		Prereq
30343	BIOL 150G	ZZ		Nutrition	4	5/26-8/8	ONLINE		
30344	BIOL 150G	ZZ1		Nutrition	4	5/26-8/8	ONLINE		
30292	BIOL 210G	ZZ2		Microbiology	4	5/26-7/17	ONLINE		Prereq
30291	BIOL 210G	ZZ		Microbiology	4	5/26-7/17	ONLINE		Prereq
<b>BIOTECHNOLOGY</b>									
30377	BTEC 105G	ZS	ZOOM	Intro to Biotechnology	4	7/6-8/14	TR	10:00-2:50 PM	Prereq
<b>BUSINESS ADMINISTRATION</b>									
30293	BUS 110G	ZZ		Intro to Business	3	5/26-8/8	ONLINE		
30333	BUS 114G	ZZ		Management	3	5/26-8/8	ONLINE		
30330	BUS 210G	ZZ		Organizational Communication	3	5/26-8/8	ONLINE		
30346	BUS 291G	ZZ		Business Internship	3	5/26-8/8	ONLINE		
<b>CHEMISTRY</b>									
30368	CHEM 115G	ZS	ZOOM	General Chemistry I	4	5/26-8/8	TR	9:00-12:50 PM	Prereq
<b>COMPUTER TECHNOLOGIES</b>									
30294	CIS 110G	ZZ		Introduction to Computers	3	5/26-8/8	ONLINE		Prereq
30295	CIS 111G	ZZ		Computer Technologies	3	5/26-8/8	ONLINE		Prereq
30296	CIS 112G	ZZ		Intro to Object Oriented Prog.	3	5/26-8/8	ONLINE		Prereq
30376	CIS 113G	ZZ		Database Design & Management	3	5/26-8/8	ONLINE		Prereq
30609	CIS 124G	ZZ		Web Development I	3	5/26-8/8	ONLINE		Prereq
30847	CIS 146G	ZS	ZOOM	Linux I	3	5/26-7/17	MW	5:30-9:10 PM	Prereq
30351	CIS 148G	ZZ		Intro to Java Programming	3	5/26-8/8	ONLINE		Prereq
30331	CIS 156G	ZZ		Computer Appl. in Business	3	5/26-8/8	ONLINE		Prereq
30335	CIS 177G	ZZ		Introduction to Python	3	5/26-8/8	ONLINE		Prereq
30610	CIS 223G	ZZ		Advanced SQL	3	5/26-8/8	ONLINE		Prereq
31024	CIS 248G	ZZ		Advanced Java Programming	3	5/26-8/8	ONLINE		Prereq
<b>CRITICAL THINKING</b>									
30338	CRIT 150G	ZZ		Critical Thinking in the Humanities	3	5/26-8/8	ONLINE		
<b>DIGITAL MEDIA TECHNOLOGY</b>									
30297	DGMT 115G	ZZ		Introduction to Graphic Design	3	5/26-7/17	ONLINE		Prereq.
30373	DGMT 135G	ZZ		Introduction to Photoshop	3	5/26-7/17	ONLINE		Prereq.

CRN	CRSE	SECT	ROOM	TITLE	CR	TERM	DAYS	TIMES	Prereq.
<b>EARLY CHILDHOOD EDUCATION</b>									
30298	ECE 202G	ZS	ZOOM	Senior Practicum: Student Teaching	3	5/26-8/8	W&OL	4:00-5:20 PM	Prereq
30608	ECE 212G	ZS	ZOOM	Senior Practicum: Professional Development	3	5/26-8/8	W&OL	4:00-5:20 PM	Prereq
<b>ECONOMICS</b>									
30345	ECON 225G	ZZ		Personal Finance	3	5/26-8/8	ONLINE		
30299	ECON 234G	ZS	ZOOM	Macroeconomics	3	5/26-7/2	T&OL	5:30-9:00 PM	
30605	ECON 235G	ZS	ZOOM	Microeconomics	3	7/6-8/14	T&OL	5:30-9:00 PM	Prereq
<b>ENGLISH</b>									
30302	ENGL 110G	ZZ2		College Composition I	4	5/26-8/8	ONLINE		Prereq
30303	ENGL 110G	ZZ		College Composition I	4	5/26-8/8	ONLINE		Prereq
30304	ENGL 117G	ZZ		Introduction to Literature	3	5/26-8/8	ONLINE		Prereq
30306	ENGL 213G	ZZ		Creative Writing	3	5/26-8/8	ONLINE		Prereq
30308	ENGL 214G	ZZ		Intro to Creative Nonfiction	3	5/26-8/8	ONLINE		Prereq
<b>FIRST YEAR SEMINAR</b>									
30371	FYE 111G	ZZ		First Year Seminar BUS HOSP	1	5/26-7/17	ONLINE		
<b>GEOGRAPHY</b>									
30612	GEOG 110G	ZZ		World Geography	3	5/26-8/8	ONLINE		
<b>HISTORY</b>									
30353	HIST 120G	ZZ		Western Civilization through 1500	3	5/26-8/8	ONLINE		
31055	HIST 130G	ZZ		Western Civilization - 1500 to Present	3	5/26-8/8	ONLINE		
30309	HIST 202G	ZZ		US History to 1870	3	5/26-8/8	ONLINE		
<b>HOSPITALITY MANAGEMENT</b>									
30349	HOS 244G	ZS	ZOOM	Intro to the Spa Industry	3	5/26-8/8	T	8:00-11:40 AM	
30361	HOS 280G	ZZ		Hospitality Industry Internshp	3	5/26-8/8	ONLINE		Prereq
<b>INFORMATION SYSTEMS TECHNOLOGY</b>									
30310	IST 150G	ZS	ZOOM	Network Oper Syst Fundamentals	3	5/26-7/17	TR	1:00-4:40 PM	
30326	IST 266G	ZS	ZOOM	Security+	3	5/26-7/17	TR	5:30-9:10 PM	Prereq
30366	IST 281G	ZZ		IST Internship	3	5/26-8/8	ONLINE		Prereq
<b>MARKETING</b>									
30736	MKTG 101G	ZZ		Introduction to Marketing	3	5/28-8/9	ONLINE		
<b>MASSAGE THERAPY</b>									
30348	MASS 172G	ZS	ZOOM	Visceral Anatomy & Physiology	4	5/26-8/8	MW	8:00-10:00 AM	Prereq
30362	MASS 182G	ZS	ZOOM	Pathology and Massage II	2	5/26-8/8	W	10:15-12:30 PM	Prereq
30334	MASS 192G	ZS	ZOOM	Clinical Experience II	1	5/26-8/8	TWRF		Prereq
30350	MASS 271G	ZS	ZOOM	Therapeutic Massage Specialties	3	5/26-8/8	R	8:00-12:00 PM	Prereq
<b>MATHEMATICS</b>									
30378	MATH 085G	ZS	ZOOM	Skills For College Math Plus	4	5/26-8/8	MW	5:00-7:20 PM	
30312	MATH 145G	ZZ		Quantitative Reasoning	4	5/26-8/8	ONLINE		Prereq
30347	MATH 147G	ZS	ZOOM	Quantitative Reasoning Plus	5	5/26-8/8	TR	8:00-11:30 AM	Prereq
30380	MATH 152G	ZS	ZOOM	College Algebra Plus	5	5/26-8/8	TR	8:00-11:30 AM	Prereq
30354	MATH 170G	ZZ		Discrete Mathematics	4	5/26-8/8	ONLINE		Prereq
30314	MATH 210G	ZS	ZOOM	Pre-Calculus	4	5/26-8/8	MW	5:00-7:20 PM	Prereq
30355	MATH 215G	ZS	ZOOM	Finite Mathematics	4	5/26-8/8	TR	2:00-4:20 PM	Prereq
30315	MATH 225G	ZZ		Probability and Statistics	4	5/26-8/8	ONLINE		Prereq
30316	MATH 230G	ZS	ZOOM	Calculus I	4	5/26-8/8	TR	4:30-6:40 PM	Prereq
30359	MATH 250G	ZS	ZOOM	Calculus II	4	5/26-8/8	TR	4:30-6:40 PM	Prereq
<b>PHILOSOPHY</b>									
30317	PHIL 240G	ZZ		Ethics	3	5/26-8/8	ONLINE		
<b>POLITICAL SCIENCE</b>									

Online

Hybrid

Custom

Full Term

1<sup>st</sup> Half2<sup>nd</sup> Half

Front Part

5

CRN	CRSE	SECT	ROOM	TITLE	CR	TERM	DAYS	TIMES	Prereq.
30318	POLS 220G	ZZ		Public Administration	3	5/26-8/8	ONLINE		
<b>PSYCHOLOGY</b>									
30319	PSYC 110G	ZZ2		Introduction to Psychology	3	5/26-8/8	ONLINE		Prereq
30320	PSYC 110G	ZZ		Introduction to Psychology	3	5/26-8/8	ONLINE		Prereq
30369	PSYC 205G	ZZ		Crisis Intervention	3	5/26-8/8	ONLINE		Prereq
30321	PSYC 210G	ZZ		Human Growth & Development	3	5/26-8/8	ONLINE		Prereq
30364	PSYC 215G	ZZ		Abnormal Psychology	3	5/26-8/8	ONLINE		Prereq
<b>SOCIOLOGY</b>									
30322	SOCI 110G	ZZ		Sociology	3	5/26-8/8	ONLINE		
30611	SOCI 120G	ZZ		Society and Technological Chng	3	5/26-8/8	ONLINE		
30365	SOCI 255G	ZZ		Societal Approaches to Health Care Systems	3	5/26-8/8	ONLINE		Prereq
<b>TEACHER PREPARATION</b>									
30367	TCHP 101G	ZZ		Intro to Exceptionalities	3	5/26-8/8	ONLINE		
<b>VETERINARY TECHNOLOGY</b>									
30324	VETN 130G	1		Veterinary Clinical Affiliation I	4	6/22-8/14	WRF	8:00-4:00 PM	Prereq
30329	VETN 225G	ZZ		Veterinary Practice Law	2	5/26-7/17	ONLINE		Prereq.
30327	VETN 226G	ZZ		Small Animal Behavior	2	5/26-8/8	ONLINE		Prereq

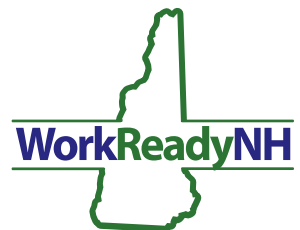
6	Online	Hybrid	Custom	Full Term	1 <sup>st</sup> Half	2 <sup>nd</sup> Half	Front Part
---	--------	--------	--------	-----------	----------------------	----------------------	------------

## WorkReadyNH

### Tuition-free professional development program for NH residents age 16+

WorkReadyNH is now online! This program addresses the highly desired employability skills that employers in NH have asked for: adequate levels of reading, math and locating information as well as soft skills such as problem solving, decision making and communication. By participating in the online version of our course, you will also gain the skills necessary to work with technology in a variety of ways such as virtual meetings, navigating learning platforms, and general use of the internet.

You will earn a completion **Certificate from the Community College System of NH**, as well as a **National Career Readiness Certificate**. These certificates can help your resume to stand out in a crowd and shows employers that you have the skills that they are looking for.



Contact WorkReadyNH at 603-427-7636 or email us at [workreadygbcc@ccsnh.edu](mailto:workreadygbcc@ccsnh.edu) to enroll in this FREE program today.

WorkReadyNH For more WorkReadyNH information, please contact: 603-427-7636 - [workreadygbcc@ccsnh.edu](mailto:workreadygbcc@ccsnh.edu)

CRN	CRSE	PORTSMOUTH CAMPUS	DATES	DAYS	TUITION
23181	NCPD 246G	WorkReadyNH Soft Skills	5/5-6/25	TR	\$0
30846	NCPD 246G	WorkReadyNH Soft Skills	6/8-6/26	MTWRF	\$0



# Funding *Your Education*

## Financial Aid at GBCC

### What Is It?

Financial Aid provides funds for direct and indirect college expenses. Direct expenses are generally those expenses charged directly to your student account, such as tuition and fees. Indirect expenses are those you pay for out-of-pocket such as for books and transportation to and from college.

Financial Aid includes:

- Grants and Scholarships, which do not have to be repaid; usually based on need
- Loans, which must be repaid; loan type is based on need
- Work-Study, an hourly wage for part-time work

### Am I Eligible?

To find out, you need to complete the FAFSA (Free Application for Federal Student Aid) at [www.studentaid.gov](http://www.studentaid.gov), and be accepted into an approved program.

### How To Apply?

**Entering Summer 2020, Fall 2020 or Spring 2021**

Submit the 2020-2021 FAFSA online

*Requires 2018 income information*

Gather your and/or your parents' or your spouse's financial information, such as tax returns, W2 forms, and information about non-taxable income.

Go to [www.studentaid.gov](http://www.studentaid.gov) and complete the FAFSA.  
Include Great Bay's school code – 002583.

**Contact us** for an appointment if you need assistance –  
we're here to help!

Office of Financial Aid: Great Bay Community College  
[www.greatbay.edu](http://www.greatbay.edu) | [gbfinaid@ccsnh.edu](mailto:gbfinaid@ccsnh.edu)



# No-Cost/ Low-Cost Textbook Options

## Looking for a way to reduce textbook costs?

### Search for “No-Cost or Low-Cost Course Material” (NoLo) classes offered here!

- NoLo courses include textbooks & other course materials that cost less than \$40 and are often **FREE**, saving you lots of money!
- In less than one year, CCSNH students have saved well over \$500,000 by taking classes that use NoLo materials.
- NoLo materials may consist of online/printed textbooks, workbooks, multimedia, Open Educational Resources (OER) and other things like calculators, homework licenses, etc.

**Ask your instructor, advisor, librarian or registrar about NoLo textbook options, and be sure to search for “No-Cost or Low-Cost Course Material” when registering!**



Take the first step towards a preparing for today's  
workforce and a more fulfilling career.

# LEARN

Advanced Manufacturing | Nondestructive Testing | CNC |  
Automotive Technology | Early Childhood Education | Information  
Systems Technology | Cybersecurity | Digital Design | Business  
Administration | Welding | Programming | Accounting | Surgical  
Technology | Veterinary Technology | Hospitality Management |  
Biotechnology | Analytics | Motorcycle Maintenance & Repair  
Software Development | Medical Assisting

Choose from  
**OVER 50**  
Associate Degree &  
Certificate Programs

Learn More at  
[greatbay.edu](http://greatbay.edu)



Great Bay  
Community College





# GET INVOLVED

## GBCC Intercollegiate Athletic Teams:

- Men's and Women's Golf
- Women's Volleyball
- Men's and Women's Basketball
- Men's Baseball
- Women's Softball

For a complete schedule of games visit:  
[www.gogreatbay.com](http://www.gogreatbay.com)

## Over 20 Student Run Clubs and Organizations

As well as:

- Civic Engagement
- Leadership Development
- Student Government Association







Great Bay  
Community College

Business &  
Training Center



Here for You  
Today  
*and*  
Tomorrow

# ONLINE PROFESSIONAL DEVELOPMENT

Courses and Certificate Programs  
Starting **April & May**

---

For more information and Schedule visit:  
[www.yougotclass.org/index.cfm/Greatbay](http://www.yougotclass.org/index.cfm/Greatbay)





**Great Bay**  
Community College

**LEARN SOMETHING NEW, ENHANCE  
YOUR SKILLS, ADVANCE YOUR CAREER  
AND IMPROVE YOUR BOTTOM LINE!**



## Professional Development

Learn or enhance your  
Microsoft skills

- Excel
- PowerPoint
- Word

## Online Learning Certificates

- Digital Marketing
- Bookkeeping
- Data Analysis

**And more...**

## Career Training

- Medical Assistant
- Medical Office Specialist

## New in Rochester!

- Non-credit Technical  
Skill Certificate Programs

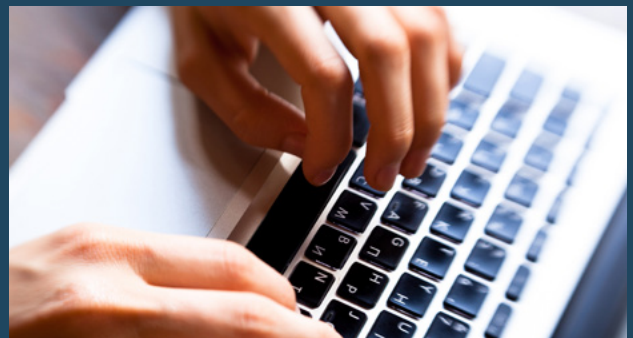
## CONTACT

For complete program information and  
course descriptions, please visit:

[www.greatbay.edu/courses  
/business-training](http://www.greatbay.edu/courses/business-training)

For general information about our  
classes please contact us at:

**603.427.7653** or [greatbaybtc@ccsnh.edu](mailto:greatbaybtc@ccsnh.edu)





Great Bay Community College partners with the greater Seacoast area businesses to train today's workforce. Do you need industry-specific employee training on your schedule at your location? Great Bay Community College can help. Our quality employee training programs can be custom-designed and delivered to your specifications. We use subject matter experts with industry experience who know how to deliver the results you desire.

Contact the Business & Training Center of Great Bay Community College at 603-427-7737 for more information on how we can help you train your employees.

### Medical Assistant Certificate Training

**Prepare for an exciting, challenging and rewarding career in Healthcare!** Learn to assist physicians by performing functions related to the administrative and clinical responsibilities of a medical office. This program is designed to meet standards set by the Affordable Care Act, the skills sets required by regional employers and preparation for the Certified Clinical Medical Assistant (CCMA) national exam.

Next class begins July 8th, for more information visit our website at

[www.greatbay.edu/courses/business-training/medical-assistant-certificate-training](http://www.greatbay.edu/courses/business-training/medical-assistant-certificate-training), call 603-427-7653 or email us at [greatbaybtc@ccsnh.edu](mailto:greatbaybtc@ccsnh.edu).

Medical Assistant Training Program, please contact: 603-427-7653

CRN	CRSE	PORTSMOUTH CAMPUS	DATES	DAYS	TIMES	TUITION
30840	NHC 140G	Medical Assistant Certificate Training	07/06-09/25	MTWR F	9:00-5:00 PM 8:00-4:00 PM	\$5500

### Medical Office Specialist Certificate

**Prepare for an exciting, challenging and rewarding career in Healthcare!** Learn to assist physicians by performing functions related to the administrative responsibilities of a medical office. This program is designed to meet standards set by the Affordable Care Act, the skills sets required by regional employers and preparation for the Certified Medical Administrative Assistant (CMAA) National exam.

Contact us at [greatbaybtc@ccsnh.edu](mailto:greatbaybtc@ccsnh.edu) or by phone at 603-427-7653 for more information and when the next class will be scheduled.

### Microsoft® Office

BUSINESS TRAINING: Microsoft® Office 603-427-7653

CRN	CRSE	PORTSMOUTH CAMPUS	DATES	DAYS	TIMES	TUITION
30889	NCCP 121G	Introduction to Excel	7/13-7/16	W	9:30-11:00 AM	\$149
30890	NCCP 122G	Intermediate Excel	7/20-7/23	W	9:30-11:00 AM	\$149
30891	NCCP 123G	Advanced Excel	7/27-7/30	W	9:30-11:00 AM	\$149

### Fundamentals of Mindfulness

This six week introductory training in Mindfulness will teach you to develop a focused and embodied attention, self-awareness, emotional intelligence, and greater sense of ease and well-being. You will learn a variety of mindfulness meditations and practical ways to integrate mindfulness into daily activities at work, home and in relationships.

Course includes:

- Training in meditation, developing awareness of breath, body, feelings and thoughts.
- Managing stress and learning how to shift from reaction to response.
- Recognizing and letting go of unhelpful habitual thoughts and mind states.
- Exploring, understanding and working with a range of emotional experiences.

No meditation experience required.

*Liz Korabek-Emerson is a certified mindfulness teacher, wellness coach and owner of Korabek Training. She has been designing and facilitating mindfulness programs for individuals and organizations since 2012.*

Fundamentals of Mindfulness

CRN	CRSE	PORTSMOUTH CAMPUS	DATES	DAYS	TIMES	TUITION
31021	NHC 123G	Fundamentals of Mindfulness	7/7-7/28	W	12:00-1:30 PM	\$140



Great Bay  
Community College

BUSINESS & TRAINING CENTER

# Online Non-Credit Professional Development **Summer 2020**

## Business

**Certificate in Accounting and Finance for Non-Financial Managers** *Utilize financial information to aid in effective decision making.* \$495

Accounting and Finance for Non-Financial Managers	6/1 - 6/26	\$195
Cash is King	7/6 - 7/31	\$195
Financial Analysis and Planning for Non-Financial Managers	8/3 - 8/28	\$195

**Certificate in Data Analysis** *Learn how to analyze data to see trends and make predictions to make good business decisions.* \$495

Introduction to Data Analysis	6/1 - 6/26	\$195
Intermediate Data Analysis	7/6 - 7/31	\$195
Advanced Data Analysis	8/3 - 8/28	\$195

**Certificate in Sales** *Increase your success with skills in relationship management, prospecting, customer management, and delivering a compelling sales presentation.* \$495

Strategic Selling with Social Media	6/1 - 6/26	\$195
Getting Started in Sale	7/6 - 7/31	\$195
Power Selling	8/3 - 8/28	\$195

**Bookkeeping Certificate** *Learn the basics of accounting & financial ledgers to maintain monthly records & a chart of accounts to match your business.* \$495

Understanding Debits and Credits	6/1 - 6/26	\$195
General Ledger and Month End Procedures	7/6 - 7/31	\$195
Closing Procedures and Financial Statements	8/3 - 8/28	\$195

**Legal Office Administration** *Become an exceptional legal practitioner in an administrative capacity.* \$245

**Productivity & Time Management Certificate** *Boost your productivity by managing your time better and increase profitability & organizational success with outcomes and results.* \$595

New 21 <sup>st</sup> Century Strategies for Productivity & Time Management	6/1 - 6/26	\$195
Productivity eTools	7/6 - 7/31	\$245
Managing Productivity	8/3 - 8/28	\$245

## Business Communication

**Certificate in Business Writing** *Move forward in your career with the keys to successful writing in the workplace.* \$495

Business Writing	6/1 - 6/26	\$195
Effective Copywriting	7/6 - 7/31	\$195
Writing News and Press Releases	8/3 - 8/28	\$195

## Training for K12 Teachers

**Certificate in Online Teaching** \$395

Advanced Teaching Online	6/1 - 6/26	\$145
Designing Online Instruction	7/6 - 7/31	\$145
Fostering Online Discussion	8/3 - 8/28	\$145

## Technology Skills

**Coding Certificate** \$595

Introduction to Coding	6/1 - 6/26	\$195
HTML Fundamentals	7/6 - 7/31	\$245
CSS Fundamentals	8/3 - 8/28	\$245

**Programming for Non-Programmers Certificate** \$495

How Programming Works	6/1 - 6/26	\$195
Basic Programming Concepts	7/6 - 7/31	\$195
Communicating with Programmers	8/3 - 8/28	\$195

For additional courses and certificates,  
online registration and more information:  
[www.greatbay.edu/btc-online](http://www.greatbay.edu/btc-online)



# Rochester Campus

Great Bay Community College in Rochester is an extension of Great Bay Community College located in Portsmouth, with a focus on technical programs and advanced manufacturing, including composites, computer numeric control (CNC), nondestructive testing, and metrology. Programs serve job seekers and business owners from New England and beyond. Short-term certificates and stackable credentials allow for flexibility to meet the growing and rapidly changing needs of skilled workers in technical fields today.

## Credit Programs

### Advanced Composites Manufacturing (ACM)

Explore multiple career options in advanced technology and specialize in structural composites, quality inspection, or computer numeric control. The certificate prepares students for high demand careers in aerospace, marine, automotive and more. Start June 15th and complete the certificate by December 19th, with an option to apply 24 credits towards an associate degree.

### Nondestructive Testing (NDT)

NDT is used to test and troubleshoot materials and products to assure safety. Students who are detail oriented, like working with technical equipment, and are interested in quality assurance to keep the world safe, are encouraged to explore this career field. Great Bay's program was recently listed among the top 20 in the US for NDT programs.

### CNC

The CNC program prepares students for jobs as computer-controlled milling machine operators for metal and plastics. Students are prepared for entry level jobs as CNC operators and quality inspectors.

### Welding

The Welding certificate program provides graduates with the entry level and intermediate skills levels to obtain employment in the field of welding. Upon graduation, students may be proficient in the use of welding equipment, set up and operation for the 5 major processes of: MIG, TIG, Stick, Oxy-fuel, and Plasma as well as auxiliary processes including F-CAW, Aluminum TIG, and Spool guns.

---

## Non-Credit Technical Skill Certificate Programs

Whether you are looking to advance your career or are an employer looking to develop the skill set of current employees, we offer short-term training and professional development programs to meet your needs.

### Certificate of Completion in Solidmodeling

Includes two courses to be taken sequentially. Skill development includes technical print reading, Solidworks and Mastercam.

### Industrial Maintenance Certificate

Includes three courses that may be taken concurrently to develop skills required to become a safe, productive technician in an industrial environment.

### Certificate in Coordinate Measuring Machine (CMM) Programming

Includes three courses to be taken sequentially. Skills include technical print reading, CMM operation, and CMM programming.

**For more information on these short-term non-credit certificates, call (603) 427-7700.**

# ROCHESTER CAMPUS SCHEDULE

CRN	COURSE	TITLE	CREDITS	DATES	DAYS	TIMES
Advanced Composites Manufacturing Program Courses (P)-Prerequisite						
30858	ACM 120G	Technical Blueprint Reading (P)	2	6/15-8/7	ONLINE	
Business and Training Center Courses and Programs Non-credit						
30874	NCPD 246G	WorkReadyNH Soft Skills	NC	7/6-7/24	MTWRF	9:00-2:00 PM
30876	NCPD 246G	WorkReadyNH Soft Skills	NC	8/24-9/11	MTWRF	9:00-2:00 PM



## Police Testing

Are you looking to become a police officer?  
The Police Testing Alliance hold exams 3 times per year.

The following are the upcoming dates:

**June 6, 2020**

For more information visit our website at  
[www.greatbay.edu/courses/business-training/police-testing](http://www.greatbay.edu/courses/business-training/police-testing)  
or call 603-427-7706.

Entry Level Police Exam for more information, please contact: 603-427-7653 - [www.greatbay.edu/police/testing](http://www.greatbay.edu/police/testing)

CRN	CRSE	PORTSMOUTH CAMPUS	DATES	DAYS	TIMES	TUITION
50004	NCPT 004G	Police Test	06/06	S	9:00-12:00 PM	\$60



# Programs of Study

## ARTS, HUMANITIES, COMMUNICATION, & DESIGN

American Studies, **A.A.**  
English, **A.A.**  
Fine Arts, **A.A.**  
Digital Media Communications, **A.S.**  
Liberal Arts, **A.A.**

## BUSINESS

Accounting, **A.S.**  
Accounting, **C**  
Business Administration, **A.S.**  
Leadership & Management, **C**  
Sales and Digital Marketing, **C**

## SOCIAL, EDUCATIONAL, & BEHAVIORAL SCIENCES

Criminal Justice, **A.S.**  
Early Childhood Education, **A.S.**, **C**  
History, **A.A.**  
Homeland Security, **C**  
Liberal Arts, **A.A.**  
Psychology, **A.A.**  
Teacher Preparation, **A.A.**

## HEALTH SCIENCES AND SERVICES

Nursing, **A.S.**  
Surgical Technology, **A.S.**  
Massage Therapy, **C**  
Veterinary Technology, **A.S.**  
Veterinary Practice Management, **C**

## HOSPITALITY & CULINARY

Event & Meeting Planning, **C**  
Hotel, Restaurant & Event Management, **A.S.**  
Hotel/Restaurant Management, **C**  
Spa & Wellness Management, **C**

## INDUSTRY & TRANSPORTATION

Automotive Technology, **C**  
Motorcycle Maintenance  
& Repair Technology, **C**  
Welding Technologies, **C**

## STEM & ADVANCED MANUFACTURING

Analytics, **A.S.**  
Advanced Composites Manufacturing, **C**  
Bioengineering, **A.S.**  
Biological Science, **A.A.**, **A.S.**  
Biotechnology, **A.S.**  
Biotechnology, **C**  
Chemistry, **A.A.**  
Computer Numeric Control, **C**  
Computer Technologies, **A.S.**  
Cybersecurity Infrastructure, **A.S.**  
Engineering Science, **A.S.**  
Environmental Science, **A.S.**  
Information Systems Technology, **A.S.**  
Information Systems Technology, **C**  
Linux, **C**  
Nondestructive Testing, **C**  
Practical Data Science, **C**  
Programming, **C**  
Software Development, **C**  
Technical Studies, **A.S.**

**TABLE:** **A.A.:** Associate of Arts Degree    **A.S.:** Associate of Science Degree    **C :** Certificate program

Important information about the educational debt, earnings, and completion rates of students who attended GBCC Gainful Employment (Certificate) programs may be found at <http://greatbay.edu/gainfulemployment>



# Important Dates 2020

4/6/2020	Summer Registration Starts – All
5/25/2020	Memorial Day Holiday – College Closed
5/26/2020	Summer Classes Start
7/3/2020	Independence Day Holiday – College Closed

## Attend a Virtual Info Session

Join us for a **Virtual Info Session**! Learn about programs, the admissions process - from application to registration, transfer pathways, paying for college/financial aid and more.

**Two sessions are held each week – one on Tuesday at 10:00AM and another on Thursday at 5:00pm.** Each live event (*via Zoom*), is hosted by one of our admissions counselors who can also answer any questions you may have.

## Take A Virtual Campus Tour

We're looking forward to showing you Great Bay in person. For now, take a **Virtual Tour** and get a glimpse of both the Portsmouth and Rochester campuses.

For more information on our Virtual Info Sessions and Tours visit:  
<http://greatbay.edu/admissions-aid/admissions/events>

**Questions?** Contact our Admissions Office today at (603) 427-7632 or [gbadmissions@ccsnh.edu](mailto:gbadmissions@ccsnh.edu)



**Portsmouth Campus:**  
320 Corporate Drive. Portsmouth, NH 03801  
(603) 427-7600 / 1-800-522-1194 (NH only)  
Fax: (603) 334-6308

**Rochester Campus:**  
5 Milton Road Unit 32. Rochester, NH 03867  
(603)427-7700  
Fax: (603) 330-3001

TDD (Telecommunications Device for the Deaf) (603) 668-1792  
TDD/Voice: Relay New Hampshire 1-800-735-2964

